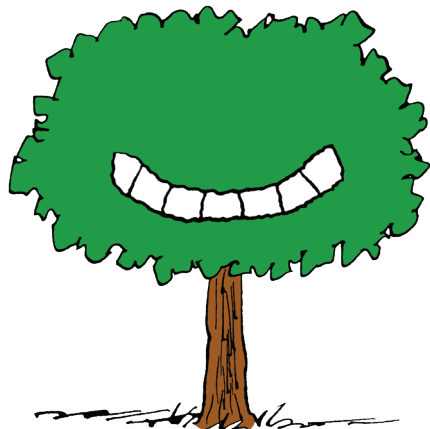


PEANUTS®



TAKE CARE OF THE EARTH

WE NEED OUR TREES



Have you ever noticed all the unique and beautiful trees in your own neighborhood? Trees come in all sorts of shapes, sizes, and kinds - each equally important in helping us and our ecosystems thrive, such as providing the oxygen we breathe, improving air quality and supporting wildlife! Go for a walk and use the tree journal provided to document and discover how many different trees make up the world around you!

Share your tree journals on social media!

#TakeCareWith Snoopy  @snoopygrams |    @Snoopy

GET STARTED!

1. Get something to write with, a hard object like a book or clipboard to write on, a flexible measuring tape if you have one, and as many printed out journal templates as you would like and go for a walk.
2. Go to the first tree you find and take some time to observe it. Have you ever noticed this tree before? What makes it unique from the other trees you have seen? How tall is it? Is it old or young (you can estimate this based on how wide the trunk is!)? How does the tree make you feel?
3. Draw the tree in the space provided, on your journal template. Feel free to add words to your drawing and be as detailed as possible!
4. Next, draw and/or describe the leaf. Does this tree have buds, flowers, or leaves? What color and shape is the leaf? Do the leaves provide shade? Make sure you observe the leaves while they are on the tree or the ground, don't pick any off the tree!
5. Next, look at the tree bark. Would you describe it as smooth or rough? Is it covered in moss or sap? What color is it?
6. Then observe the size - mark small, medium, or large / tall, thin, or thick. If you have a measuring tape, use it to measure the circumference of the trunk. Circumference is the distance around something. If you don't, give the tree a hug! Can you reach all the way around and have your hands touch?
7. You can repeat this for as many different trees as you would like!
8. When you are done, you can hang up your tree journal, or if you have multiple pages, you can staple them together to create a booklet to appreciate the importance of trees in your community!

PEANUTS[®]

TAKE CARE
OF
THE EARTH

MY TREE JOURNAL

MY TREE IS :

**Mark any & all that apply!

SMALL MEDIUM LARGE

TALL THIN THICK

_____ circumference (measurement around trunk)

Leaf drawing / description :

Bark drawing / description :

My Observations & Thoughts :

Use this tall space to draw your tree!